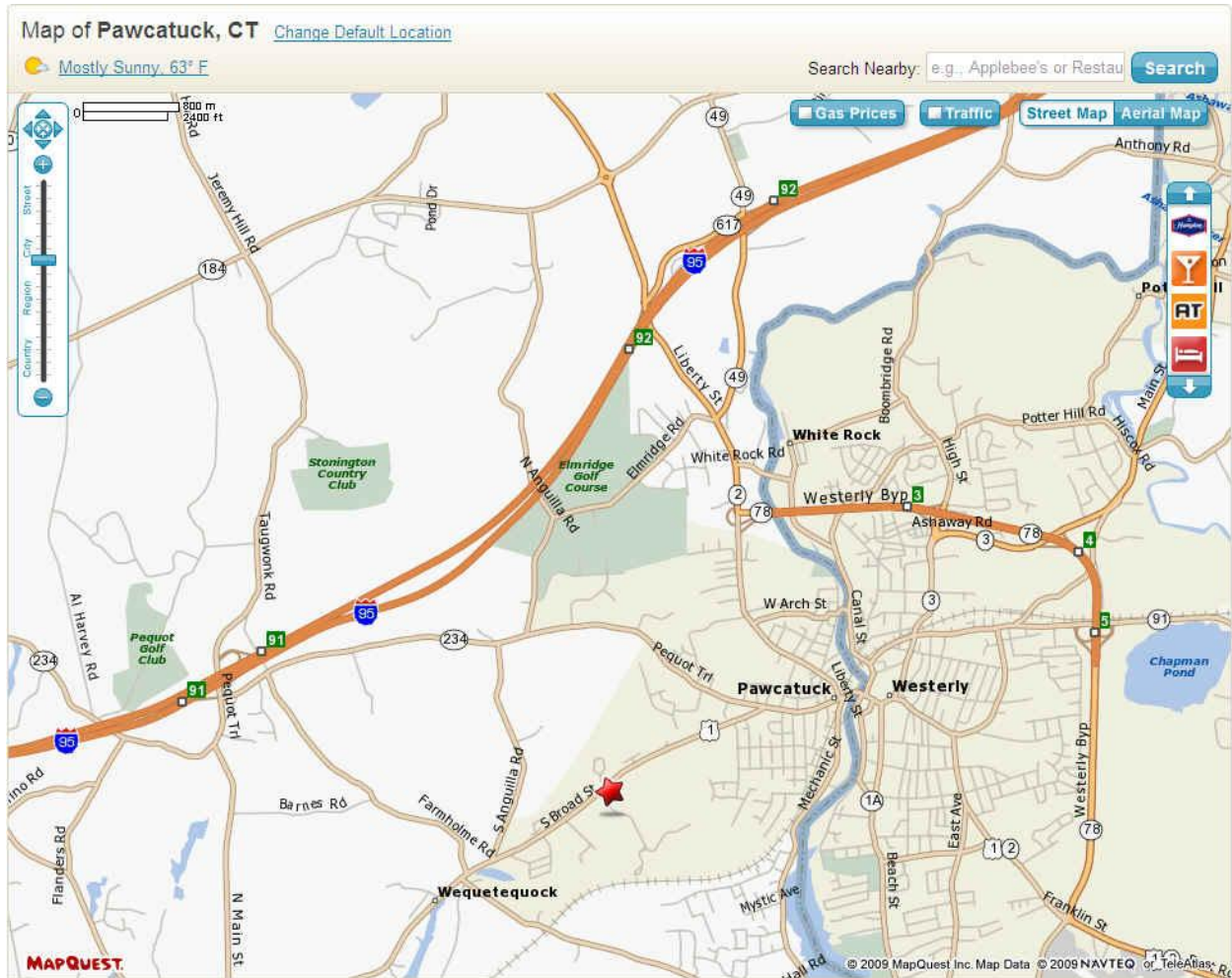


Directions to MicroSystems Integration, Inc.(MSI)



From New Haven, New London via Route #I-95 North



From (A) New Haven to (B) MSI

- From New Haven or New London **take Route # I-95 North**

- **Take Exit #91** off Route # I-95 North
- At end of exit, **go straight through traffic light**, you will be on **Route #234 East** heading towards Westerly, Rhode Island
- Take **3rd Right** onto **Farmholme Road**. Stay on Farmholme Road until you come to a **STOP sign**.
- At the STOP sign you will be facing Route #1; South Broad Street. **Take a Left at STOP sign.** (See inserted Map below)



- **Stay on Route #1 for about one mile** You will pass Stonington High School on the right and the Stonington Police Department on the left. You will come to a traffic light.
- **At the traffic light take a Left** Go past the entrance to the small shopping center on your right. You will go past a sign for the Hi-Tech Profiles (HTP) Buildings and come to an island in the road. MicroSystems Integration, Inc. will be in the building cluster on your right and our office is the last office suite on the right #103.

From Providence via Route #I-95 South



From (A) T.F. Green Airport, Prov. R.I. to
(B) MSI

- Take **Route #95 South** from Rhode Island to Connecticut
- In Connecticut, **Take Exit #91** off Route # I-95 South
- Turn **Left at end of exit** on to Taugwonk Rd. Go under the overpass and **turn Left at traffic light** onto **Route #234 East** heading towards Westerly, Rhode Island
- Take **3rd Right** onto **Farmholme Road**. Stay on Farmholme Road until you come to a **STOP sign**.
- At the STOP sign you will be facing Route #1; South Broad Street. **Take a Left at STOP sign**. (See inserted Map above)
- **Stay on Route #1 for about one mile** You will pass Stonington High School on the right and the Stonington Police Department on the left. You will come to a traffic light.
- **At the traffic light take a Left** Go past the entrance to the small shopping center on your right. You will go past a sign for the Hi-Tech Profiles (HTP) Buildings and come to an island in the road. MicroSystems Integration, Inc. will be in the building cluster on your right and our office is the last office suite on the right #103.